

RODEWAY

Qualified **CHOICE HOTELS**
VENDOR | INTERNATIONAL

ECONO LODGE/RODEWAY INTERIOR SIGNAGE PACKAGE

CONTACT:
AMY SCHEER
316-267-4171 ext. 273
316-267-6883 FAX
amy.scheer@identitygroup.com

We Make Ordering Easy!

WAYFINDING

Send Graphics Systems, Inc. your hotel's floorplan and let us assist with your signage order. Our experienced wayfinding staff will determine your property's specific requirements and provide you with a detailed plan that includes a graphic of each sign, sign type, quantity, price and location, all in an easy to read format.

NO DESIGN FEES

Our talented design team will create any additional signage you require, including state and local code signage, free of charge.

NO MAP CHARGES

Our professional artists will draw your fire evacuation maps free of charge. Just send us your floorplans and we'll do the rest.

Guest Room Signage



4-1/2" x 4-1/2"
ER 1.0
Room Number
with No Smoking Symbol



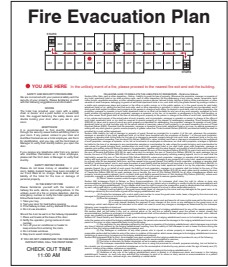
4-1/2" x 4-1/2"
ER 1.0
Room Number



2-1/2" x 2-1/2"
ER 1.1
Guest Room
No Smoking Symbol



2-1/2" x 2-1/2"
ER 1.1
Guest Room
Accessible Symbol



8-1/2" x 11"
FEP0911B ER
Guest Room Evacuation
with State Laws

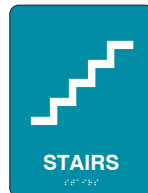
Identification Signage



10" x 4"
ER 4.0
Room Identification



6" x 8"
ER 3.0
Restroom Identification
with Symbol



6" x 8"
ER 3.0
Stair Identification
with Symbol



8" x 10"
ER 6.0
Interior Stairwell ID

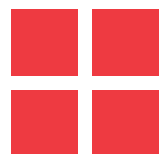


6" x 8"
ER 5.0
In Case Of Fire

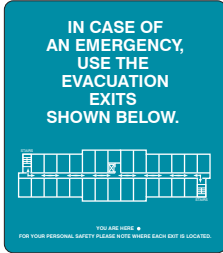
Directional Signage



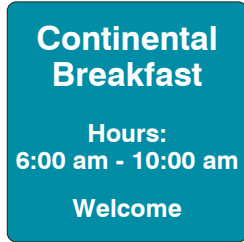
12" x 4"
ER 1.0
1 - 2 Line Directional



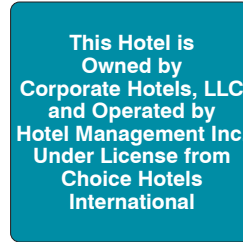
Informational Signage



9-1/4" x 10-1/2"
FEP0911 ER
Elevator
Evacuation Sign



10" x 10"
ER 7.5
Breakfast Informational



10" x 10"
ER 7.0
Owner / Operator
Informational



10" x 10"
ER 8.0
Owner / Operator Informational
w/ Manager On Duty Insert



10" x 1-1/2"
ER 8.0 INSERT
Manager On Duty Insert

Miscellaneous Signage



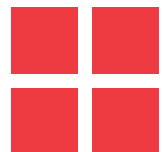
36-7/8" x 19-1/8"
ER 10.0A
Logo Sign



12" x 18"
ER 18.0
Parking Informational



12" x 18"
ER 18.0
Parking Informational



CHOICE HOTELS INTERNATIONAL

CORPORATE APPROVED LOBBY LOGOS NOW AVAILABLE FROM GRAPHICS SYSTEMS, INC.

Lobby logos shown are approved exclusively by Choice Hotels International for all corporate and franchise properties.

To place your order please fill out the form and FAX: 316-267-6883 or call: 316-267-4171.



63-1/2" w x 13-3/8" h
CQ 9.4HA Quality Inn
\$311.73



79-3/8" w x 14-1/2" h
CQ 9.7AA Comfort Suites (horizontal)
\$324.32



36-7/8" w x 33-3/4" h
CQ 9.7A Comfort Suites
\$349.83



30" w x 22-3/4" h
FDL3023 Econo Lodge
\$309.62



30" w x 22-3/4" h
FDL3024 Econo Lodge Inn & Suites
\$331.24



Comfort INN

BY CHOICE HOTELS

30-7/8" w x 39" h
CQ 10.4A Comfort Inn
\$298.86



Comfort INN & SUITES

BY CHOICE HOTELS

30-7/8" w x 38-5/8" h
CQ 10.5A Comfort Inn & Suites
\$339.85



18" x 18"
FDL1818 SLE
\$126.00



Clarion

BY CHOICE HOTELS

30-7/8" w x 28-1/2" h
CL 9.1A Clarion
\$313.65



Clarion Hotel

BY CHOICE HOTELS

30-7/8" w x 35" h
CL 9.2A Clarion Hotel
\$337.63



Clarion Resort

BY CHOICE HOTELS

30-7/8" w x 35-3/8" h
CL 9.3A Clarion Resort
\$334.99



BY CHOICE HOTELS

36-7/8" w x 19-1/8" h
ER 19.0A Rodeway Inn
\$293.50



18" x 18"
FDL1818 SLE-1
\$126.00



QUALITY INN

BY CHOICE HOTELS

31-7/8" w x 27-3/8" h
CQ 9.4A Quality Inn
\$324.54



QUALITY SUITES

BY CHOICE HOTELS

32-5/8" w x 26-3/4" h
CQ 9.5A Quality Inn & Suites
\$329.66



QUALITY INN & SUITES

BY CHOICE HOTELS

32-5/8" w x 26-3/4" h
CQ 9.8A Quality Inn & Suites
\$334.66



QUALITY HOTEL

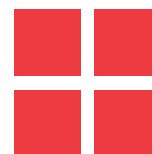
BY CHOICE HOTELS

32-5/8" w x 26-3/4" h
CQ 9.9A Quality Hotel
\$329.66



BY CHOICE HOTELS

36-3/4" w x 25-1/4" h
MA 6.0A Mainstay Suites
\$318.68



CHOICE HOTELS INTERNATIONAL LOBBY LOGO ORDER FORM

Please fill out the form below and FAX: 316-267-6883 or call: 316-267-4171.



Contact Name: _____ Purchase Order: _____ Date: _____
 Phone: (____) _____ FAX: (____) _____

Item No.	Property Logo	Face Color (choose one)		Optional Side Color Gold or Silver (20% upcharge)	Price	Total	Quantity	Total Price
		Polished Gold, Brushed Gold	Polished Silver, Brushed Silver					
FDL1818 SLE	Sleep Inn				+	126.00	x	=
FDL1818 SIS	Sleep Inn & Suites				+	126.00	x	=
MA 6.0A	Mainstay Suites				+	318.68	x	=
CL 9.1A	Clarion				+	313.65	x	=
CL 9.2A	Clarion Hotel				+	337.63	x	=
CL 9.3A	Clarion Resort				+	334.99	x	=
CQ 9.4	Quality Inn				+	324.54	x	=
CQ 9.4HA	Quality Inn (Horizontal)				+	311.73	x	=
CQ 9.5A	Quality Suites				+	329.66	x	=
CQ 9.8A	Quality Inn & Suites				+	334.66	x	=
CQ 9.9A	Quality Hotel				+	329.66	x	=
CQ 9.7A	Comfort Suites (Vertical/Stacked)				+	349.83	x	=
CQ 9.7AA	Comfort Suites (Horizontal)				+	324.32	x	=
CQ 10.5A	Comfort Inn & Suites				+	339.85	x	=
CQ 10.4A	Comfort Inn				+	298.86	x	=
FDL3023	Econo Lodge				+	309.62	x	=
FDL3024	Econo Lodge Inn & Suites				+	331.24	x	=
ER 10.0A	Rodeway Inn				+	293.50	x	=
SUBTOTAL								

Lobby Logos include mounting tape applied to the back, silicone adhesive, mounting template and registration marks. Custom sizes are also available. Call for pricing.

Note: Tax, Shipping and Handling are not included. We will ship via the method or carrier using our best judgement unless a specific carrier or routing instructions are clearly indicated at the time the order is placed. All shipments are F.O.B Plant of Origin. All prices shown are NET.

Following to be completed by Graphics Systems, Inc.

Sales Tax	
Shipping & Handling	
TOTAL	

PAYMENT METHOD:

VISA MC AMEX NUMBER _____
 EXP _____ CVV NO.* _____
 CARDHOLDER NAME _____
 SIGNATURE _____

* (3 digits on back of VISA or MC credit card or 4 digits on front of AMEX)

SHIP TO:

PROPERTY _____
 ATTENTION _____
 STREET ADDRESS _____
 CITY _____ STATE _____
 ZIP _____

